

Riders' Advisory Council Station Rehabilitation

3 March 2021

marta 





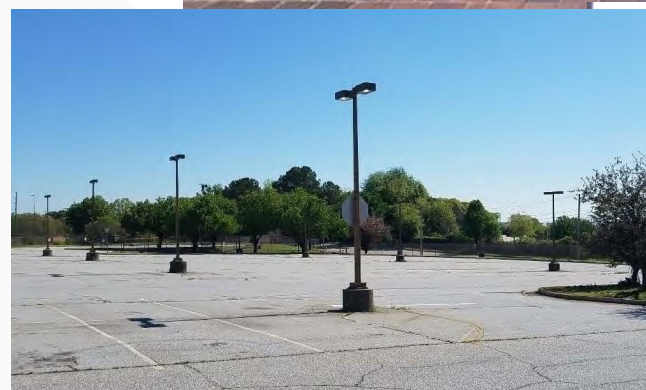
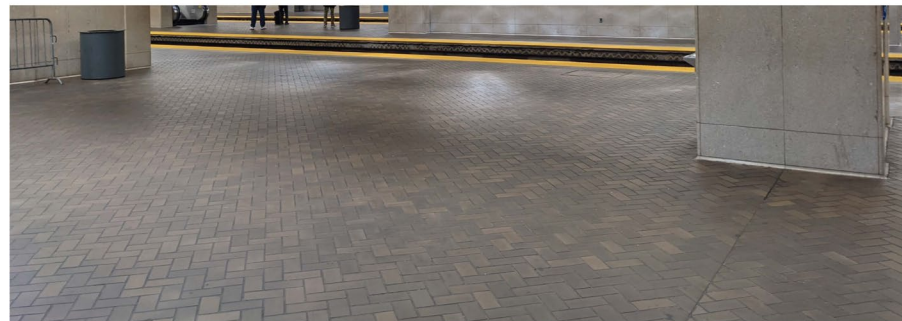
Program Overview

The Station Rehabilitation Program's primary goal is to address many of the customer-facing elements within a station that our public experiences every day. The program will revive these areas by replacing old, worn-out materials with new, fresh and easy-to-maintain materials and elements that will help to enliven each station.

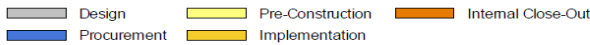
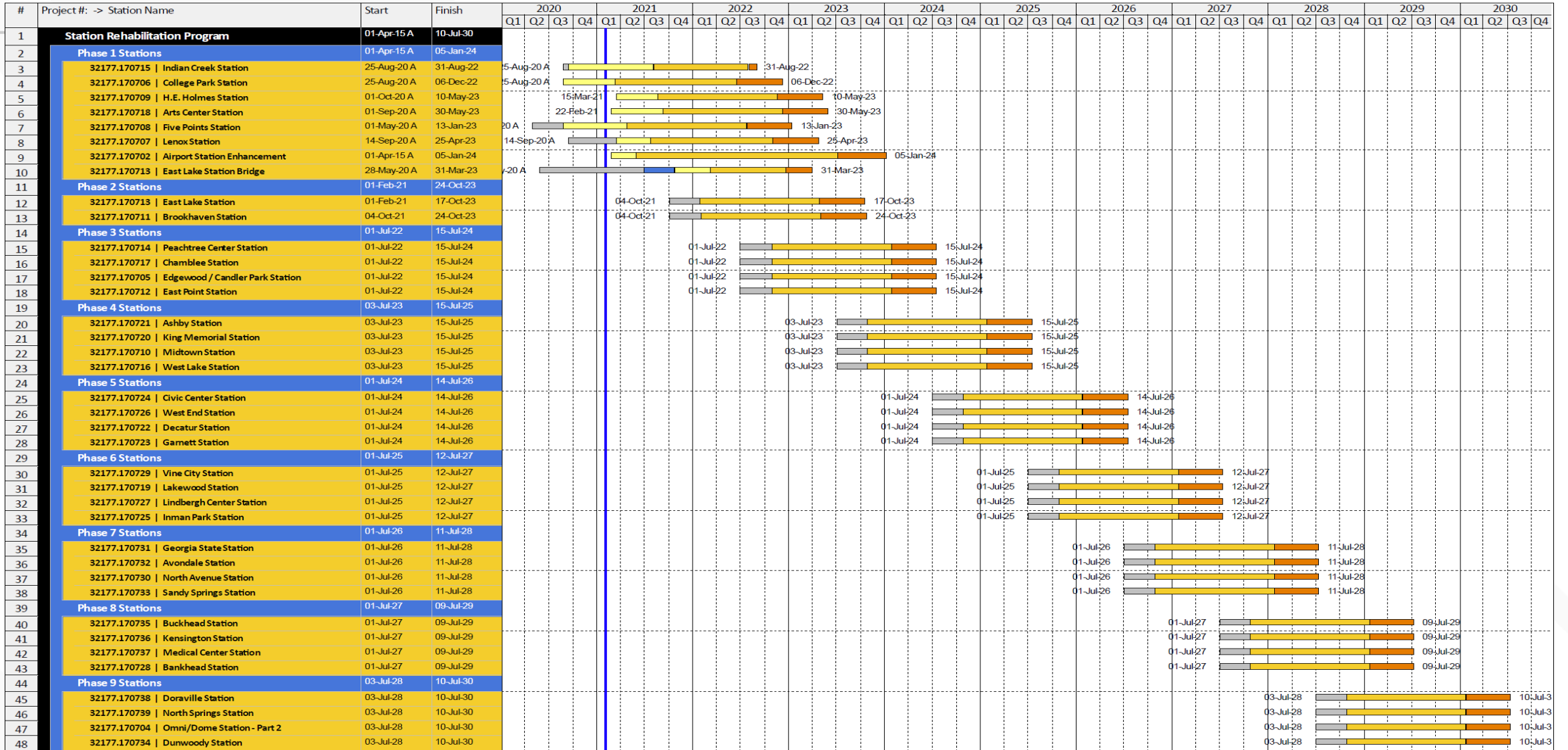
What is Station Rehab?

Typical work/material replacement at the stations are:

- Foundation repairs
- Ceiling upgrades
- Pavers/tiles
- Interior wayfinding signs
- Wall cladding/painting
- Seating
- Lighting
- SMART public restrooms
- Landscaping
- Parking area fencing
- Improved branding signage
- Heavy power washing/cleaning
- Paving replacement



What is the Schedule? (Overall Program)

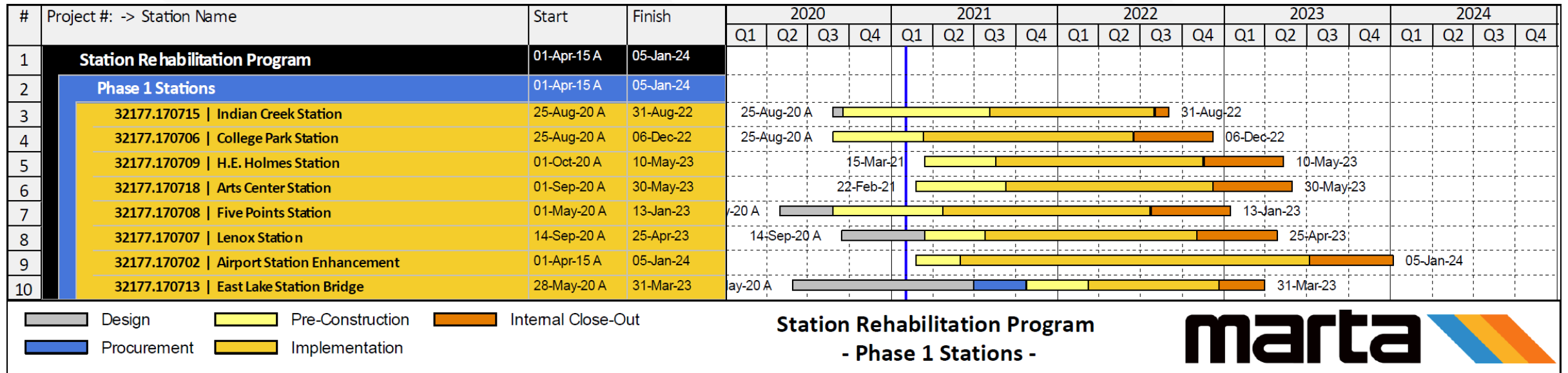


Station Rehabilitation Program - All Phases Overview -



March 3, 2021

What is the Schedule? (1st Wave)





Current Stations and Examples of Elements

College Park Station - Renovation

- Plaza paving replacement (Early work package)
- Landscaping
- Rehabilitation of fencing
- Light poles
- New wayfinding signage
- Pressure washing

Current Stations and Examples of Elements

Lenox Station - Renovation

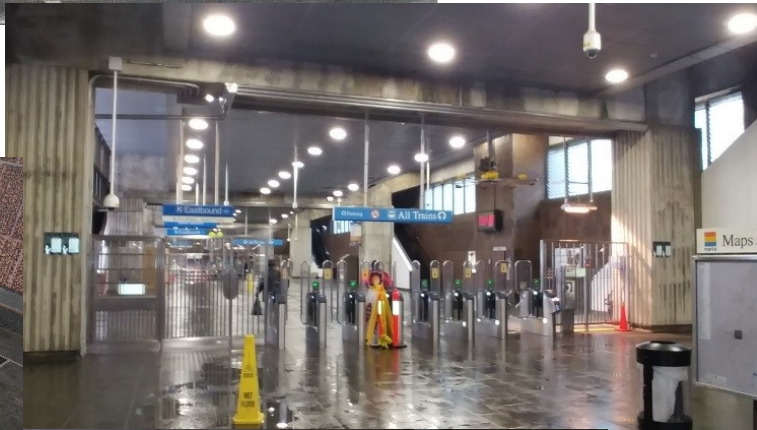
- Plaza waterproofing/ paving
- LED lighting
- Expansion joints
- Wayfinding station signage
- Pressure washing
- Reseal skylights
- New bollards



Current Stations and Examples of Elements

H.E. Holmes Station – Renovation

- New landscaping and fencing in parking areas
- Waterproofing inside the station
- New pavers on platform
- New wayfinding signage inside station
- Repaint all exterior station walls
- New trash receptacles throughout the station
- Install new pedestrian tunnel lighting
- New bus loop paving

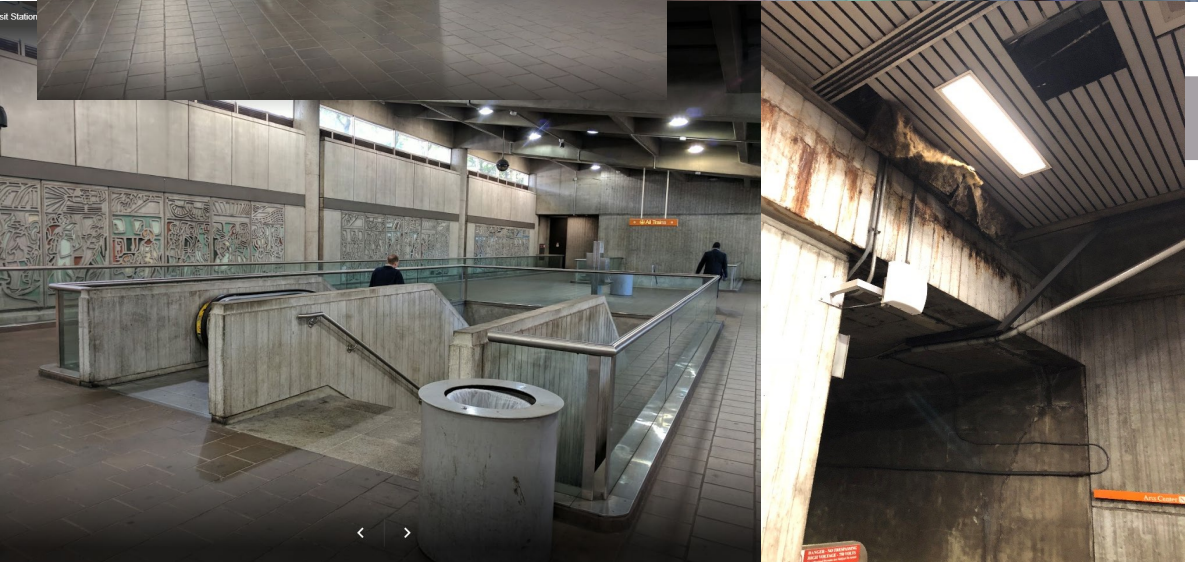




Current Stations and Examples of Elements

Arts Center Station – Renovation

- Waterproofing throughout station
- New bus loop paving
- Wayfinding signage inside station
- Low-maintenance landscaping in bus loop
- Clean artwork throughout station
- Replace ceiling on platform
- New trash receptacles throughout station
- New pavers on concourse and platform



Current Stations and Examples of Elements

Indian Creek Station - Renovation

- Main entrance renovation
- Benches/ trash receptacles
- Wall cladding
- LED lighting
- Artwork
- Pressure washing/cleaning



Current Stations and Examples of Elements

Five Points Station - Renovation

- Benches/ trash receptacles
- Tile walls
- Platform tile paving
- LED lighting
- New drop ceilings/coffered ceilings
- Expansion joints
- Pressure washing
- Updated Eiseman Facade

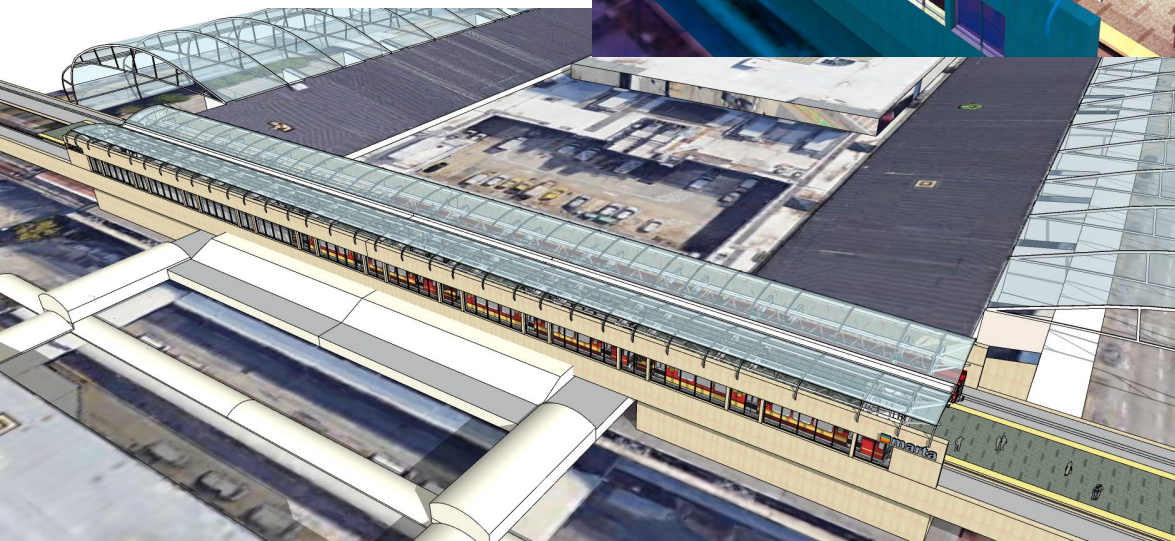
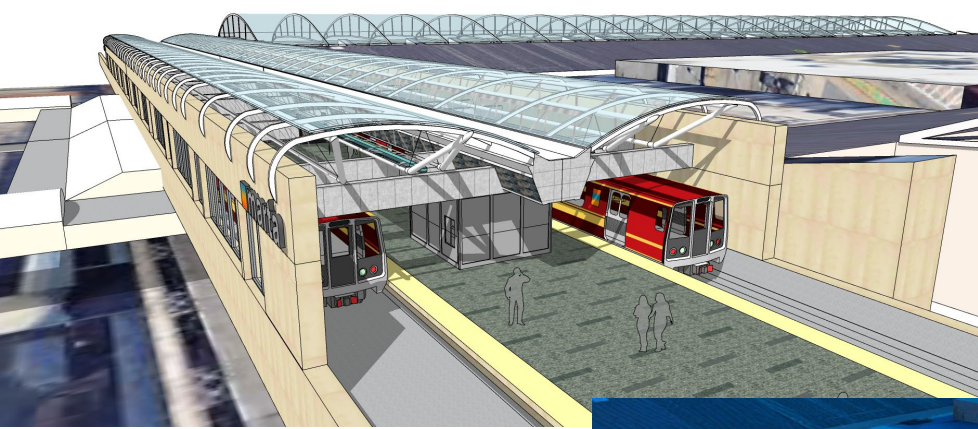


Current Stations and Examples of Elements

Airport Station - Enhancement

Complete interior enhancement including:

- New tile floors
- New RideStore
- New wall cladding
- New ceilings and lighting
- Existing elevator replacement and addition of a new elevator
- New canopy on top of platform matching the airport's new canopies





Current Stations and Examples of Elements

East Lake Pedestrian Bridge - renovation

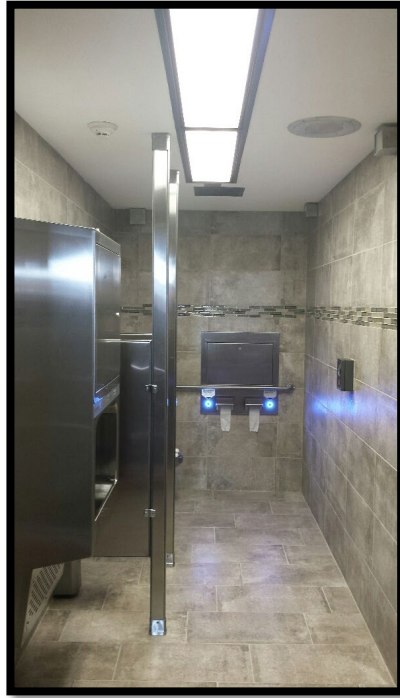
- Demo north and south pedestrian bridges
- Replace with prefabricated and prefinished (painted) steel truss pedestrian bridge
- New roof deck
- New screen walls

Early Work Packages

SMART Restroom Program

The scope of work for this project is to convert, renovate and provide vandal-resistant, unisex facilities for the 14 public restrooms currently open in rail stations.

- These fully automated, remotely monitored accommodations are state-of-the-art facilities that will enhance the public perception of MARTA while providing customers with clean, safe, and accessible restrooms.
- This project will improve the overall customer experience system-wide and at the selected rail stations, reducing utility and supply costs and increasing the productivity of each location.
- First-wave stations to be addressed are:
 - East Point
 - Doraville
 - H.E. Holmes
 - Dome/State Farm/Mercedes-Benz



Early Work Packages

Operator Restroom Program

The scope of work for this program is to prepare the required utility connections at end-line station platforms and install a pre-fabricated operator's restroom that is employee card accessible for rail operators.

- The restrooms will be a state-of-the-art facilities that provide MARTA employees with a clean, safe, and accessible restroom.
- This project will improve the overall delivery of customer service across the selected rail stations by allowing operators to have a facility within reach during rail turn-around operations.
- End-line Stations to be addressed are:
 - Indian Creek
 - H.E. Holmes
 - North Springs

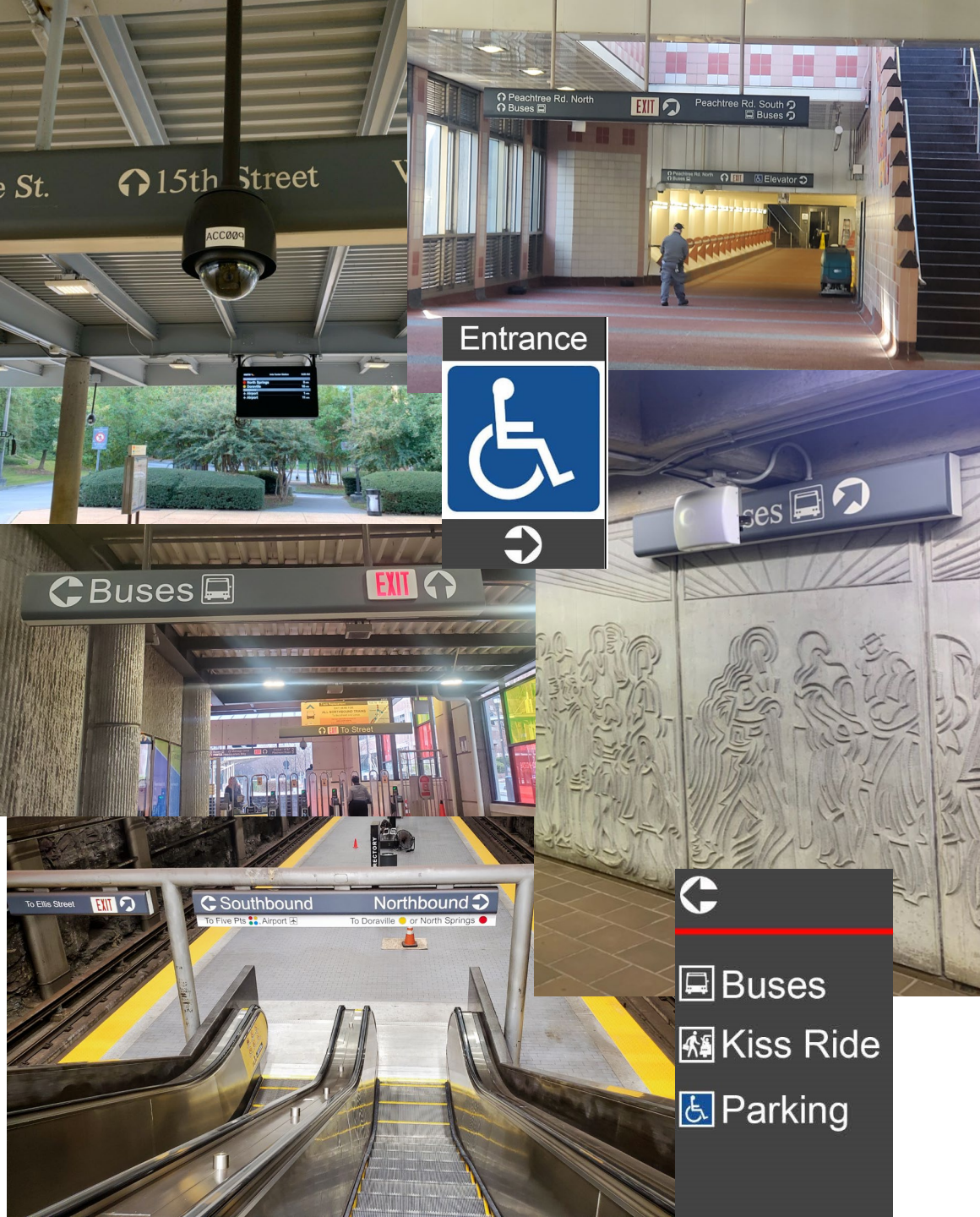


Early Work Packages

Wayfinding Signage

The scope of work for this program is to remove and replace all interior wayfinding signage within the stations. Existing signage is dated and, in some cases, peeling, faded or blocked by new technology. The new, clearer signage will help customers better navigate in and out of the stations and assist in getting them to their correct destinations.

- Removal of all existing interior wayfinding signage
- New, long-lasting material signs to be installed
- Better, visible locations for wayfinding signage





ART IN TRANSIT/Artbound



Thank You